

Macmillan advanced specialist practitioner for care homes



South West
Yorkshire Partnership
NHS Foundation Trust

Since December 2018, Macmillan Cancer Support have funded an advanced specialist practitioner (ASP) post, hosted by South West Yorkshire Partnership Foundation Trust, to support care home residents with palliative care needs.

The role focuses on identifying a person's end of life care needs and considers their wishes and preferences. This includes advance care planning to ensure that a person's preferences and wishes are identified and discussed to support individualised care planning.



Macmillan Cancer Support have commissioned an independent external evaluator to consider the impact of the post.



In the two-year evaluation, the ASP supported **228 residents in care homes.**

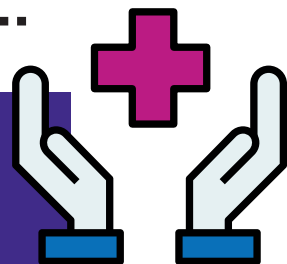


AS A RESULT OF THE ASP INPUT:

- For those who had died at the time of the report and had expressed a preferred place of death - 95% died in their preferred place
- 87% of residents had an advance care plan or best interests plan completed
- 84% had a treatment escalation plan
- There was a reduction in the number of unplanned admissions post ASP involvement

What other stakeholders such as care home staff and GPs said about the role...

GPs, community matrons and district nurses all reflected positively on the expertise of the ASP – “a really good resource”, “modelling good performance” and “authentic and compassionate leadership”.



Care home staff described how the ASP was able to put plans in place and fast track services.

A GP spoke about how communication was better and support provided earlier to residents since the ASP involvement.

Several stakeholders referred to the ASP's emotional intelligence, describing her as “approachable”, “really connecting”, and “empathetic”.



GPs spoke of care home staff being more empowered and more confident and reflected how the ASP had educated a lot of staff.



Scan here to read the full report:



If you require a copy of this information in any other format or language please contact the Trust.

With **all of us** in mind.